



Northeast/East Central Region

Quarterly Report – October/November/December 2024

Sarah Miller, Director

Emily Jane Murray, Northeast Public Archaeology Coordinator

Robbie Boggs, East Central Public Archaeology Coordinator

Kassie Kemp, HMS Database Manager

Preservation and Pints Networking Event

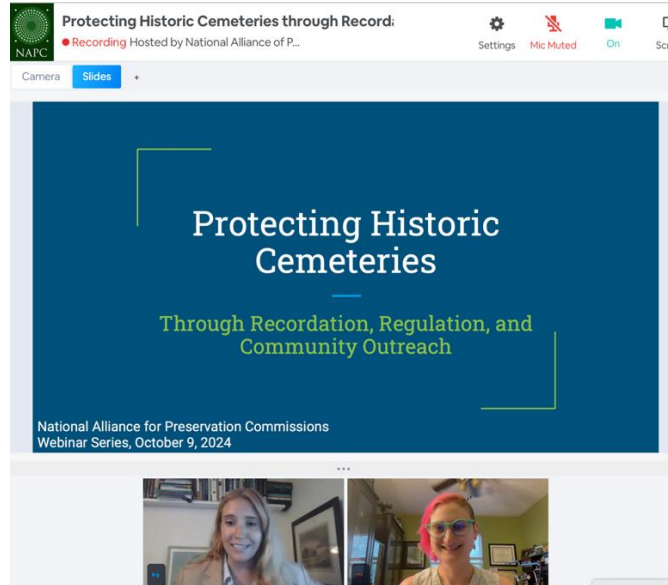
FPAN's Northeast Regional Center partnered with the Florida Trust for Historic Places and the American Planning Association to host a Preservation and Pints networking event. Over 30 participants meet up on October 30 at Wicked Barley Brewing in Jacksonville. Participants included historic preservationists, planners, historians, archaeologists, and more.



Over 30 cultural resource specialists and planners had a chance to network during our Preservation and Pints event at Wicked Barley Brewing in Jacksonville.

NAPC Webinars on Historic Cemetery Preservation

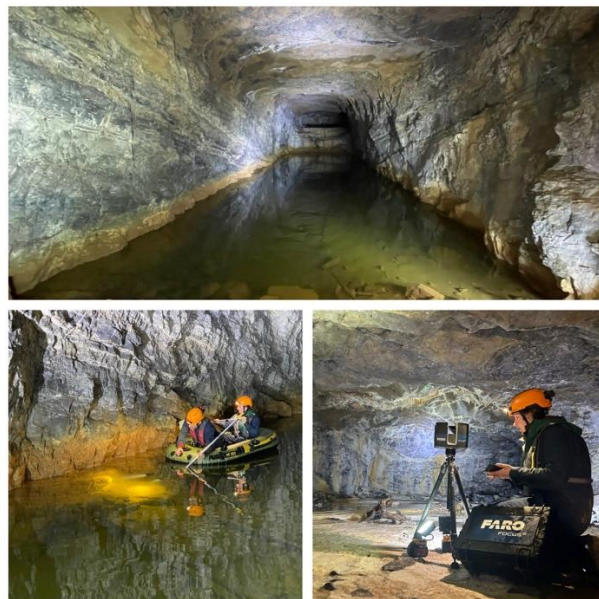
Emily Jane Murray, from FPAN's Northeast Regional Center, co-hosted a National Association of Preservation Commissions webinar on historic cemetery preservation with Emma Dietrich, former FPAN staff and current cemetery planner at Prince William County, Virginia. The webinar had over 150 participants from across the United States. Emily Jane highlighted some of the work completed by the Northeast and East Central Regions to help local communities with documenting, researching, recording, and preserving historic cemeteries.



Emma Dietrich and Emily Jane Murray discussed how to protect historic cemeteries with over 150 people from across the country during their NAPC webinar.

Marshall Tunnel Scanning Project

The Northeast Regional Center was awarded a grant subcontract to assist the Virginia Division of Historic Resources and Data Investigations with 3D documentation of a portion of the eastern portal of the Marshall Tunnel. This project builds on a previous grant funded project from 2022. The project is testing methods of combining underwater photogrammetry with terrestrial laser scanning and photogrammetry to create a model of the tunnel. Emily Jane travelled to Botetourt County, Virginia in December to collect the data.



The Marshall Tunnel project team collecting underwater photogrammetry and terrestrial laser scanning data inside the tunnel.

Taft Memorial Cemetery CRPT Workshop

FPAN's East Central Regional Center held a CRPT class in Orlando, graduating 22 new members into the CRPT Community. We partnered with Dr. Zachary Gilmore's Public Archaeology Class of Rollins College and Taft community members while working in Taft Memorial Cemetery. It was great to facilitate an environment where the college students learned from the stories and perspectives of the cemetery's descendants.



Rollins College public archaeology students, Taft Community Members with Robbie Boggs and Sarah Miller in Taft Memorial Cemetery during CRPT



Robbie Boggs facilitating discussion of final resting places during CRPT

Thousand Island Kayak Tour

FPAN's East Central Regional Center partnered with the Environmentally Endangered Lands Program (EEL) to provide a kayak tour. Members of the public joined Robbie Boggs and Alexandra Schilling, EEL's Program Education Coordinator, to learn about the history and ecology of the Thousand Islands Conservation Area in Brevard County.



Alexandra Schilling, EEL's Program Education Coordinator, leading the way in the Thousand Island Conservation Area Kayak Tour

HMS Database Management Activities

Kassie worked on QRQC and updates for the HMS Florida Monitoring Database. Kassie completed an FMSF update to the Database that added 100 archaeological sites, 27 cemeteries, and 55 structures to the Database. After the official launch of the HMS Florida Course Portal built in Canvas, Kassie continued to work with Rachael Kangas to fix any kinks and issues in the Portal and manage new Scout sign-ups as well as help volunteers navigate the portal. Kassie continued work on the DHR Special Category Grant titled "St. Johns River Coastal Zone Survey and Resiliency Project" awarded to the FPAN Northeast Region. She worked with Northeast FPAN staff to create maps for permits for the project and manage data created through monitoring visits. Kassie also worked to create documentation and spreadsheets of the work completed during the grant for the first required quarterly grant report.

Kassie worked closely with FPAN staff to complete site file updates for archaeological sites and cemeteries in the Northeast and East Central regions. Kassie and HMS Scout Chris Nolan worked together to complete updated and new FMSF forms for cemeteries in the Northeast Region visited by FPAN staff and cemeteries Chris visited while in Florida, focusing on those in Madison County. Along with most other FPAN staff, Kassie attended the Southeastern Archaeological Conference held in

Williamsburg, Virginia November 13-16, 2024. Kassie presented a paper entitled *Together We Can Do So Much: Community Partnerships and The Heritage Monitoring Scouts (HMS) Florida Program* with co-authors Rachael Kangas, Mary Furlong Minkoff, Chris Nolan in the FPAN organized symposium “Step Up, Step Back”: 20 Years of FPAN, Community Collaboration, and the Future of Public Archaeology. Kassie’s presentation reviewed the HMS Florida program, training, and database and focused on the community partners, like the superstar Chris Nolan, that make the program what it is. The presentation ended with an interview with Chris Nolan, asking questions about her opinion on the HMS program and her experience as an HMS Scout.

Chris Nolan
THE Heritage Monitoring Scout

- > Became an HMS Scout in 2017
- > Focuses on cemetery assessments and recording cemeteries on the Florida Master Site File
- > Monitored cemeteries in 31 of Florida's 67 counties . . . so far

244 Cemeteries Recorded

590 Cemeteries Monitored

479 Scout Reports completed

Chris working to record a cemetery in Madison County

Kassie’s SEAC presentation focused on 8 years of HMS and how far the program has come, but it ended with the Scouts that make the program possible. Chris Nolan calls herself THE Heritage Monitoring Scout and her accomplishments with the program prove that to be true. The presentation ended with a great interview allowing Chris to give her opinions on the program in her own words.

Date	Event Type	Region	Goal(s)	County	City	Event Name	# of People	Staff	# of Vols	Total Vols Hours	Other notes - partners, location, etc.
10/1/24	Presentation/Lecture	NE	Outreach	St. Johns	Ponte Vedra Beach	Ancient Fermentation	10	Emily Jane Murray			At the Ponte Vedra Beach library
10/2/24	Presentation/Lecture	EC	Outreach	Brevard	Palm Bay	Cemeteries as Outdoor Museums	10	Robbie Boggs			Palm Bay Public Library
10/3/24	Site Visit	EC	Outreach	Martin	Stuart	Coastal midden monitoring	2	Robbie Boggs			Worked with Sara Ayers-Rigsby from SE/SW region
10/3/24	Site Visit	NE	Outreach	Volusia	Oak Hill	Saints and Sinners GPR follow up	5	Emily Jane Murray			followed up on GPR surveys and marker repair
10/4/24	Presentation/Lecture	EC	Outreach	Martin	Stuart	Archaeology 101	30	Robbie Boggs			Elliott Museum staff and volunteers
10/9/24	Presentation/Lecture	NE	Outreach	Out-of-State	Zoom	NAPC Webinar on Cemetery Preservation	150	Robbie Boggs			Webinar for the National Association of Preservation Commissions. Presented with Emma Dietrich.
10/19/24	Adult Training/Workshop	EC	Outreach	Orange	Orlando	CRPT Workshop	24	Sarah Miller, Robbie Boggs			Rollins College students and Taft Community Members - held at Taft Rec Center and Taft Memorial Cemetery
10/29/24	Site Visit	EC	DHR	Brevard	Cocoa	monitoring day at Lake Monroe/Seminole Ranch Conservation Areas	3	Emily Jane Murray, Robbie Boggs			
10/30/24	Site Visit	NE	Outreach	Clay	Orange Park	GPR at Souter Cemetery	6	Emily Jane Murray			
10/30/24	Adult Training/Workshop	NE	Outreach	Duval	Jacksonville	Preservation and Pints	30	Emily Jane Murray			Networking event in partnership with the Florida Trust and the APA. At Wicked Barley.
10/31/24	Site Visit	HMS	Local Government	Out-of-Region	Madison	HMS Florida/FMSF cemetery work	1	Chris Nolan	1	16	Taylor Co and Madison Co site reports to include photo conversions. Research on requested cemetery. Zoom interview.

11/14/24	Presentation/ Lecture	NE	Outreach	Out-of- State	Williamsburg	Poster at SEAC annual conference	35	Emily Jane Murray			Ramie Gougeon, Emily Jane Murray, Lindsey Cochran, Ben Burgen and Meredith Marten - Preliminary Results of the Southeastern Archaeological Conference Heritage at Risk Survey
11/14/24	Presentation/ Lecture	NE	Outreach	Out-of- State	Williamsburg	paper at SEAC annual conference	40	Emily Jane Murray			Emily Jane Murray and Katherine Sims We Dig 1565: 20 Years of Collaboration between FPAN NE and the City of St. Augustine Archaeology Program
11/21/24	Meeting	NE	Outreach	St. Johns	Virtual	meeting with Maranda Kles about Saints and Sinners Cemeteries	1	Emily Jane Murray			
11/22/24	Site Visit	NE	DHR	St. Johns	Ponte Vedra Beach	site tour of Guana Peninsula with Keith Ashley and Victoria	4	Emily Jane Murray			Lia Samson and Candance Killian from GTM there too
11/23/24	Presentation/ Lecture	NE	Outreach	Volusia	Ponce Inlet	Archaeology Walk at Ponce Preserve	23	Emily Jane Murray			
12/4/24	Site Visit	NE	Outreach	Out-of- State	Botetourt County, VA	3D documentation of Marshall Tunnel	5	Emily Jane Murray			fieldwork spanned 12/2- 12/5, in partnership with Virginia DHR and Data Investigations
12/5/24	Meeting	EC	Outreach	Orange	Orlando	Project Access	2	Robbie Boggs			Met with Kathy, director for Orlando Center about potential partnering. Scheduled a program for 1/24/25
12/9/24	Presentation/ Lecture	EC	Outreach	Brevard	Cocoa Beach	Thousand Islands Kayak Tour	6	Robbie Boggs			Partnered with Alexandra Schilling for kayak tour for the public
12/10/24	School/Youth Program/ Workshop	EC	Outreach	Seminole	Chuluota	First Floridians / Intro to Arch	15	Robbie Boggs			Home School group at Mah-Kah-Wee girl scout camp
12/10/24	Site Visit	NE	Outreach	Nassau	Yulee	scanning at Kings House	1	Sarah Miller, Emily			work with the Gullah/Geechee Nation and Rep Jenkins

								Jane Murray			
--	--	--	--	--	--	--	--	----------------	--	--	--